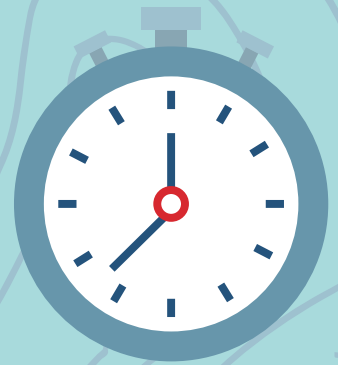


# Top five causes of Train Cancellations

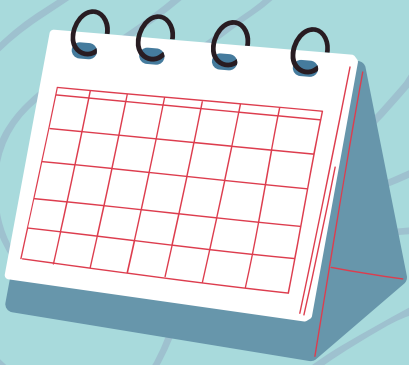
Driver Issues

1



2

Conductor Issues



3

Engine Faults



4

Disruptive weather conditions

- Extreme weather is a problem across two or more of their 14 routes



Fatalities

- six occurred on a level crossing
- 17 involved people trespassing on the railway
- 283 were suicides or suspected suicides
- Around 4.4% of suicides in Great Britain take place on the railway

5

